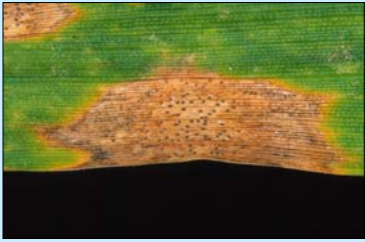


Leaf Diseases in Wheat

Septoria



Factors affecting leaf disease severity and fungicide treatment

- Disease susceptibility of wheat variety
- Incidence of disease in the region
- Weather conditions conducive to spread of disease



Leaf rust

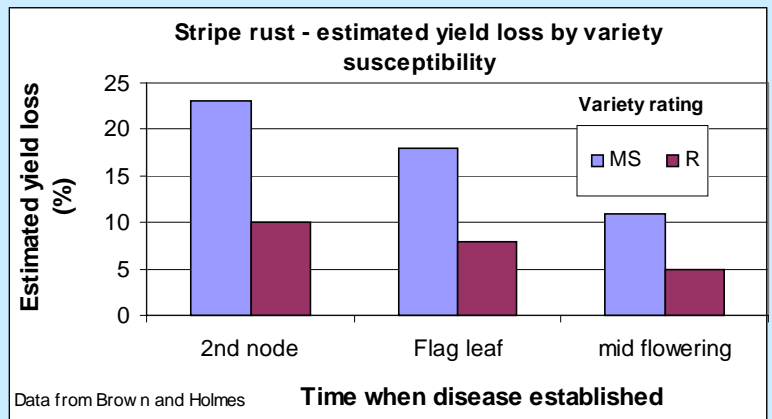
Stripe rust

- One of the most devastating leaf diseases
- Most wheat varieties grown in Victoria have an MS or better rating
- Yield loss in figure below refers to stripe rust found on 30% of leaves



Stem rust

If there is a rust outbreak it is essential to treat crops early - regular monitoring (every week) after the end of tillering is essential when there is disease in the district.



Suggested fungicide spray program (when disease first noticed)

Variety Rust Rating	1st Node	3rd Node	Flag Leaf Emergence	Full Head Emergence
S Susceptible	Triademefon		Propiconazole Tebuconazole	
MS Moderately susceptible		Half rate: Propiconazole Tebuconazole	Propiconazole Tebuconazole	
MR Moderately resistant		Half rate: Propiconazole Tebuconazole		Half rate: Propiconazole Tebuconazole